



An ISO 9001: 2008
Certified Company



DPL 110
W.E.F. 28-03-2022



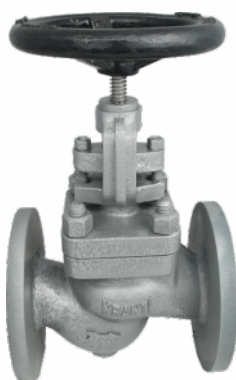
The Ultimate Solution

INDEX

page

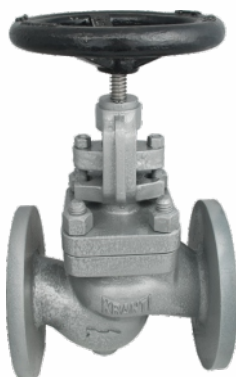
CAST IRON GLOBE VALVE, STOP & NON RETURN VALVE	
CAST IRON HORIZONTAL LIFT CHECK VALVE	1
C.I. ANGLE GLOBE VALVE, STOP & NON RETURN VALVE	
CAST IRON ANGLE LIFT CHECK VALVE	
CAST IRON ACCESSIBLE FEED CHECK VALVE	2
CAST IRON SWING CHECK VALVE	
CAST IRON "Y" TYPE STRAINER SCREWED	
CAST IRON "Y" TYPE STRAINER FLANGED	
CAST IRON "INVERTED TYPE STEAM TRAPS	3
CAST IRON MOISTURE SEPARATOR	
SG IRON FULL LIFT SAFETY VALVE ANGLE PATTERN	
S.S STEAM TRAP	4
CAST STEEL GLOBE VALVE PN 40	
CAST STEEL ANGLE GLOBE VALVE PN 40	
CAST STEEL HORIZONTAL LIFT CHECK VALVE PN 40	
CAST STEEL ANGLE LIFT CHECK VALVE PN 40	5
CAST STEEL PARALLEL SLIDE BLOW OFF VALVE	
CAST STEEL SLEEVE PACKED WATER LEVEL GAUGE	
CAST STEEL "Y" TYPE STRAINER FLANGED	
CAST STEEL ACCESSIBLE FEED CHECK VALVES	6
CAST STEEL MOISTURE SEPARATOR	
CAST STEEL BALL VALVE SCREWED	
BALL VALVE FLANGED	
CAST STEEL GATE VALVE CLASS-150	7
CAST STEEL GLOBE VALVE CLASS-150	
CAST STEEL HORIZONTAL LIFT CHECK VALVE CLASS-150	
CAST STEEL SWING CHECK VALVE CLASS-150	
CAST STEEL FULL LIFT SAFETY VALVE	8
BRONZE FUSIBLE PLUGS	
BRONZE WATER LEVEL GAUGE FLANGE	9
CAST IRON & S.G. IRON BUTTERFLY VALVE	
WITH LEVER & GEAR OPERATED	10-11-12
CAST IRON DUAL PLATE CHECK VALVE	
S.G. IRON WAFER TYPE CHECK VALVE	
CAST IRON T TYPE STRAINER	13
CAST IRON BALL VALVE SCREWED & FLANGED ENDS	
CAST IRON Y TYPE STRAINER SCREWED & FLANGED	14
CAST IRON SLUICE VALVE DOUBLE FLANGED PN-1.6	
CAST IRON RISING SPINDLE GATE VALVE	
CAST IRON SLUICE AS PER IS 780	15
CAST IRON Y TYPE STRAINER FLANGED TABLE - E	
CAST IRON REFLUX VALVE PN 1.6	
DUCTILE IRON RESILIENT SEATED GATE VALVE	16
S.S 304 & S.S 316 BALL VALVE SCREWED & FLANGED	17
CAST IRON SINGLE & DOUBLE AIR VALVE (REGULATING)	
KINETIC AIR VALVES	18



(WITH TEST CERTIFICATE IN FORM III-C)
1

Model No. : PV-101A

Product Name : Cast Iron Globe Valve
Product Standard : BS 5152 / Din 86251
Type of Pattern : Straight Pattern
Product Description : Bolted Bonnet, Outside Screw & Yoke type Rising Stem
Body & Bonnet : Cast Iron as per IBR 86 to 93 Gr. A
Type of seat & Disc : Renewable
Trim : Stainless Steel (AISI 410)
Handwheel : Cast Iron as per IS 210 Gr. FG 200
Stud, Nut & Washer : Carbon Steel as per IS 1367
Gasket : Steam Jointing Sheet as per IS 2712 Gr. W/3
Gland Packing : Braided Graphited as per IS 4687
Pressure Rating : Till 150 mm PN 16 & For 200 mm PN 10
Hydraulic Test Pressure : Body 26 Kg/cm², Seat 17.3 Kg/cm²
Working Pressure : Max. BOP 13 Kg/cm²
Working Temperature : Max. 220°C
End details : Flanged ends as per DIN 2533 Raised Face
Note : For 200mm
Hydraulic Test Pressure : Body 17 Kg/cm², Seat 11.3 Kg/cm²
Working Pressure : Max. BOP 8.5 Kg/cm²
End details : Flanged ends as per DIN 2532 Raised Face

Size/Inch	MM	Unit Price
1/2"	15 MM	1896
3/4"	20 MM	2098
1"	25 MM	2328
1 1/4"	32 MM	3520
1 1/2"	40 MM	4278
2"	50 MM	5386
2 1/2"	65 MM	7987
3"	80 MM	10830
4"	100 MM	14891
5"	125 MM	18923
6"	150 MM	26666
8"	200 MM	44670

2

Model No. : PV-101C

Product Name : Cast Iron Stop & Non Return Valve
Product Standard : BS 5152 / Din 86251
Type of Pattern : Straight Pattern
Product Description : Bolted Bonnet, Outside Screw & Yoke type Rising Stem
Body & Bonnet : Cast Iron as per IBR 86 to 93 Gr. A
Type of seat & Disc : Renewable
Trim : Stainless Steel (AISI 410)
Handwheel : Cast Iron as per IS 210 Gr. FG 200
Stud, Nut & Washer : Carbon Steel as per IS 1367
Gasket : Steam Jointing Sheet as per IS 2712 Gr. W/3
Gland Packing : Braided Graphited as per IS 4687
Pressure Rating : Till 150 mm PN 16 & For 200 mm PN 10
Hydraulic Test Pressure : Body 26 Kg/cm², Seat 17.3 Kg/cm²
Working Pressure : Max. BOP 13 Kg/cm²
Working Temperature : Max. 220°C
End details : Flanged ends as per DIN 2533 Raised Face
Note : For 200mm
Hydraulic Test Pressure : Body 17 Kg/cm², Seat 11.3 Kg/cm²
Working Pressure : Max. BOP 8.5 Kg/cm²
End details : Flanged ends as per DIN 2532 Raised Face

Size/Inch	MM	Unit Price
1/2"	15 MM	2279
3/4"	20 MM	2517
1"	25 MM	2792
1 1/4"	32 MM	4221
1 1/2"	40 MM	5138
2"	50 MM	6461
2 1/2"	65 MM	9583
3"	80 MM	13000
4"	100 MM	17868
5"	125 MM	22708
6"	150 MM	31999
8"	200 MM	53604

3

Model No. : PV-103A

Product Name : Cast Iron Horizontal Lift Check Valve
Product Standard : BS 5153
Type of Pattern : Straight pattern
Product Description : Bolted Cover
Body & Bonnet : Cast Iron as per IBR 86 to 93 Gr. A
Type of seat & Disc : Renewable
Trim : Stainless Steel (AISI 410)
Stud, Nut & Washer : Carbon Steel as per IS 1367
Gasket : Steam Jointing Sheet as per IS 2712 Gr. W/3
Pressure Rating : Till 150 mm PN 16 & For 200 mm PN 10
Hydraulic Test Pressure : Body 26 Kg/cm², Seat 17.3 Kg/cm²
Working Pressure : Max. BOP 13 Kg/cm²
Working Temperature : Max. 220°C
End details : Flanged ends as per DIN 2533 Raised Face
Note : For 200mm
Hydraulic Test Pressure : Body 17 Kg/cm², Seat 11.3 Kg/cm²
Working Pressure : Max. BOP 8.5 Kg/cm²
End details : Flanged ends as per DIN 2532 Raised Face

Size/Inch	MM	Unit Price
1/2"	15 MM	1761
3/4"	20 MM	2031
1"	25 MM	2300
1 1/4"	32 MM	3249
1 1/2"	40 MM	3994
2"	50 MM	4876
2 1/2"	65 MM	7147
3"	80 MM	9720
4"	100 MM	12185
5"	125 MM	17030
6"	150 MM	23527
8"	200 MM	36548


Model No. : PV-102A

Product Name : Cast Iron Angle Globe Valve
Product Standard : BS 5152 / Din 86251
Type of Pattern : Right Angle Pattern
Product Description : Bolted Bonnet, Outside Screw & Yoke type Rising Stem
Body & Bonnet : Cast Iron as per IBR 86 to 93 Gr. A
Type of seat & Disc : Renewable
Trim : Stainless Steel (AISI 410)
Handwheel : Cast Iron as per IS 210 Gr. FG 200
Stud, Nut & Washer : Carbon Steel as per IS 1367
Gasket : Steam Jointing Sheet as per IS 2712 Gr. W/3
Gland Packing : Braided Graphited as per IS 4687
Pressure Rating : PN 16
Hydraulic Test Pressure : Body 26 Kg/cm², Seat 17.3 Kg/cm²
Working Pressure : Max. BOP 13 Kg/cm²
Working Temperature : Max. 220°C
End details : Flanged ends as per DIN 2533 Raised Face

Size/Inch	MM	Unit Price
1"	25 MM	2505
1¼"	32 MM	3452
1½"	40 MM	4494
2"	50 MM	5713
2½"	65 MM	8257
3"	80 MM	11168
4"	100 MM	14891
5"	125 MM	19791
6"	150 MM	26315


Model No. : PV-102B

Product Name : Cast Iron Stop & Non Return Valve
Product Standard : BS 5152 / Din 86251
Type of Pattern : Right Angle Pattern
Product Description : Bolted Bonnet, Outside Screw & Yoke type Rising Stem
Body & Bonnet : Cast Iron as per IBR 86 to 93 Gr. A
Type of seat & Disc : Renewable
Trim : Stainless Steel (AISI 410)
Handwheel : Cast Iron as per IS 210 Gr. FG 200
Stud, Nut & Washer : Carbon Steel as per IS 1367
Gasket : Steam Jointing Sheet as per IS 2712 Gr. W/3
Gland Packing : Braided Graphited as per IS 4687
Pressure Rating : PN 16
Hydraulic Test Pressure : Body 26 Kg/cm², Seat 17.3 Kg/cm²
Working Pressure : Max. BOP 13 Kg/cm²
Working Temperature : Max. 220°C
End details : Flanged ends as per DIN 2533 Raised Face

Size/Inch	MM	Unit Price
1"	25 MM	3007
1¼"	32 MM	4138
1½"	40 MM	5391
2"	50 MM	6856
2½"	65 MM	9909
3"	80 MM	13401
4"	100 MM	17868
5"	125 MM	23749
6"	150 MM	31581


Model No. : PV-104

Product Name : Cast Iron Angle Lift Check Valve
Product Standard : BS 5153
Type of Pattern : Right Angle pattern
Product Description : Bolted Cover
Body & Bonnet : Cast Iron as per IBR 86 to 93 Gr. A
Type of seat & Disc : Renewable
Trim : Stainless Steel (AISI 410)
Stud, Nut & Washer : Carbon Steel as per IS 1367
Gasket : Steam Jointing Sheet as per IS 2712 Gr. W/3
Pressure Rating : PN 16
Hydraulic Test Pressure : Body 26 Kg/cm², Seat 17.3 Kg/cm²
Working Pressure : Max. BOP 13 Kg/cm²
Working Temperature : Max. 220°C
End details : Flanged ends as per DIN 2533 Raised Face

Size/Inch	MM	Unit Price
1"	25 MM	2409
1¼"	32 MM	3330
1½"	40 MM	4197
2"	50 MM	5346
2½"	65 MM	7823
3"	80 MM	10423
4"	100 MM	14484
5"	125 MM	18546
6"	150 MM	23850


Model No. : PV-105

Product Name : Cast Iron Accessible feed Check valve
Type of Pattern : Right Angle pattern
Product Description : Straight & Curved Inlet without inspection Branch
Type of seat & Disc : Renewable
Trim : Stainless Steel (AISI 410)
Stud, Nut & Washer : Carbon Steel as per IS 1367
Gasket : Steam Jointing Sheet as per IS 2712 Gr. W/3
Pressure Rating : PN 10
Hydraulic Test Pressure : Body 21 Kg/cm², Seat 14 Kg/cm²
Working Pressure : Max. BOP 10.54 Kg/cm²
Working Temperature : Max. 220°C
End details : Flanged ends as per BS 10 Table F, Flat face

Size/Inch	MM	Unit Price
1"	25 MM	11477
1¼"	32 MM	13936
1½"	40 MM	17897
2"	50 MM	25960
2½"	65 MM	32162

8

Model No. : PV-106

Product Name : Cast Iron Swing Check Valve
Product Standard : BS 5153
Type of Pattern : Straight Pattern
Product Description : Bolted Cover
Type of seat & Disc : Renewable
Trim : Stainless Steel (AISI 410)
Stud, Nut & Washer : Carbon Steel as per IS 1367
Locking Screw : Stainless Steel as per AISI 304
Gasket : Steam Jointing Sheet as per IS 2712 Gr. W/3
Pressure Rating : Class 125
Hydraulic Test Pressure : Body 21 Kg/cm², Seat 14 Kg/cm²
Working Pressure : Max. BOP 10.54 Kg/cm²
Working Temperature : Max. 220°C
End details : Flanged ends as per ANSI B 16.1 CL-125 Flat Face

Size/Inch	MM	Unit Price
1½"	40 MM	4169
2"	50 MM	6362
2½"	65 MM	8499
3"	80 MM	10423
4"	100 MM	14281
5"	125 MM	19019
6"	150 MM	19966
8"	200 MM	40811

9

Model No. : PV-107

Product Name : Cast Iron "Y" Type Strainer
Type of Pattern : "Y" Type
Product Description : Screwed in Bonnet
Body & Cover : Cast Iron as per IBR 86 to 93 Gr. A
Strainer : Stainless Steel as per AISI 304
Gasket : Steam Jointing Sheet as per IS 2712 Gr. W/3
Pressure Rating : PN 10
Hydraulic Test Pressure : Body 26 Kg/cm²
Working Pressure : Max. BOP 13 Kg/cm²
Working Temperature : Max. 220°C
End details : Screwed Female Ends

Size/Inch	MM	Unit Price
½"	15 MM	420
¾"	20 MM	569
1"	25 MM	868
1¼"	32 MM	1285
1½"	40 MM	1651
2"	50 MM	2681

10

Model No. : PV-108

Product Name : Cast Iron "Y" Type Strainer
Type of Pattern : "Y" Type
Product Description : Bolted Cover
Body & Cover : Cast Iron as per IBR 86 to 93 Gr. A
Strainer : Stainless Steel as per AISI 304
Gasket : Steam Jointing Sheet as per IS 2712 Gr. W/3
Drain Plug : Carbon Steel as per IS 1367
Pressure Rating : PN 10
Hydraulic Test Pressure : Body 17 Kg/cm²
Working Pressure : Max. BOP 10.55 Kg/cm²
Working Temperature : Max. 220°C
End details : Flanged Ends

Size/Inch	MM	Unit Price
1"	25 MM	2193
1¼"	32 MM	3574
1½"	40 MM	3654
2"	50 MM	5442
2½"	65 MM	8448
3"	80 MM	9368
4"	100 MM	15298
5"	125 MM	23147
6"	150 MM	26802

11

Model No. : PV-109

Product Name : Cast Iron Vertical Inverted Steam Trap
Type of Pattern : Vertical Type
Product Description : Bolted Cover
Body & Cover : Cast Iron as per IBR 86 to 93 Gr. A
Bucket : Stainless Steel as per AISI 304
Gasket : Steam Jointing Sheet as per IS 2712 Gr. W/3
Pressure Rating : Class 150
Hydraulic Test Pressure : Body 300Psi (g)
Working Pressure : Max. BOP 150Psi (g)
Working Temperature : Max. 220°C
End details : Female Ends to BSP Parallel

Size/Inch	MM	Unit Price
½"	15 MM	2443
¾"	20 MM	3061
1"	25 MM	4679
1½"	40 MM	10931
2"	50 MM	13824

12

Model No. : PV-109A

Product Name : Cast Iron Inverted Steam Trap
Type of Pattern : Horizontal Type
Product Description : Bolted Cover
Body & Cover : Cast Iron as per IBR 86 to 93 Gr. A
Bucket : Stainless Steel as per AISI 304
Gasket : Steam Jointing Sheet as per IS 2712 Gr. W/3
Pressure Rating : Class 150
Hydraulic Test Pressure : Body 300Psi (g)
Working Pressure : Max. BOP 150Psi (g)
Working Temperature : Max. 220°C
End details : Female Ends to BSP Parallel

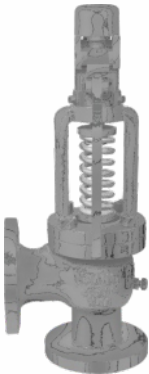
Size/Inch	MM	Unit Price
1/2"	15 MM	2675
3/4"	20 MM	3537
1"	25 MM	5341
1 1/2"	40 MM	12326
2"	50 MM	15588

13

Model No. : PV-110

Product Name : Cast Iron Moisture Separator
Type of Pattern : Horizontal Type
Product Description : Provided Internal Ribs which removed the condensate from steam lines
Body : Cast Iron as per IBR 86 to 93 Gr. A
Gasket : Steam Jointing Sheet as per IS 2712 Gr. W/3
Drain Plug : Carbon Steel as per IS 1367
Pressure Rating : Class 150
Hydraulic Test Pressure : Body 300 Psi (g)
Working Pressure : Max. BOP 150 Psi (g)
Working Temperature : Max. 220°C
End details : Flanged Ends to Bs10 Table F

Size/Inch	MM	Unit Price
1"	25 MM	4712
1 1/2"	40 MM	8514
2"	50 MM	14824
2 1/2"	65 MM	24933
3"	80 MM	26149
4"	100 MM	41655

14

Model No. : PV-112

Product Name : SG Iron Full Lift Safety Valve
Type of Pattern : Angle Pattern
Product Description : Bolted Bonnet, Spring Loaded Safety Valve
Body & Bonnet : SG Iron AS per ASTMA 536
Type of seat & Disc : Renewable
Trim : Stainless Steel (AISI 410)
Stud & Nuts : Carbon Steel AS per IS 1367
Hydraulic Test Pressure : Body 20.7 Kg/cm², Seat 10.52 Kg/cm²(Steam)
Working Temperature : Max. 220°C
End details : Inlet Flanged end as per Table F Outlet Flange AS per Table D

Size	MM	Unit Price
1"x 1 1/2"	25x40	28028
1"x 2"	25x50	32232
1 1/2"x2"	40x50	35050
1 1/2"x2 1/2"	40x65	40293
2"x2 1/2"	50x65	45544
2"x3"	50x80	52313

15

STAINLESS STEEL
Model No. : PV-301

Product Name : Cast Stainless Steel Thermodynamic Steam Trap
Product Description : Moving Disc with inbuilt integral Strainer
Body & Bonnet : Stainless Steel as per AISI 420
Disc : Stainless Steel as per AISI 420
Plug : Stainless Steel as per AISI 420
Strainer : Perforated SS Sheet as per AISI 304
Hydraulic Test Pressure Body : 63.3Kg/Cm²
Working Pressure : Max. BOP 31.6 Kg/Cm²
Working Temperature : Max. 400°C
End Details : Screwed Female BSP Taper Threads

Size/Inch	MM	Unit Price
1/2"	15 MM	2233
3/4"	20 MM	2435
1"	25 MM	3142

(WITH TEST CERTIFICATE IN FORM III-C)
16

Model No. : PV-201

Product Name : Cast Steel Globe Valve
Product Standard : BS 5160 / DIN 2401
Type of Pattern : Straight Pattern
Product Description : Bolted Bonnet, Outside Screw & Yoke type Rising Stem
Body & Bonnet : Cast Steel as per ASTM A 216 Gr. WCB
Type of seat & Disc : Renewable
Trim : Stainless Steel (AISI 410)
Handwheel : Cast Iron as per IS 210 Gr. FG 200
Stud : Alloy Steel as per ASTM A 193 Gr. B7
Nut : Alloy Steel as per ASTM A 194 Gr. 2H
Gasket : Spiral Wound Gasket S.S. 304 Graphite Filled
Gland Packing : Braided Graphite as per IS 4687
Pressure Rating : PN 40
Hydraulic Test Pressure : Body 76 Kg/cm², Seat 38 Kg/cm²(Steam)
Working Temperature : Max. 425°C
End details : Flanged ends as per DIN 2545 Raised Face

Size/Inch	MM	Unit Price
1/2"	15 MM	4231
3/4"	20 MM	4678
1"	25 MM	5594
1 1/4"	32 MM	8044
1 1/2"	40 MM	8686
2"	50 MM	11105
2 1/2"	65 MM	17564
3"	80 MM	20457
4"	100 MM	29224
5"	125 MM	40634
6"	150 MM	57055
8"	200 MM	101030

17

Model No. : PV-202

Product Name : Cast Steel Angle Globe Valve
Product Standard : BS 5160 / DIN 2401
Type of Pattern : Right Angle Pattern
Product Description : Bolted Bonnet, Outside Screw & Yoke type Rising Stem
Body & Bonnet : Cast Steel as per ASTM A 216 Gr. WCB
Type of seat & Disc : Renewable
Trim : Stainless Steel (AISI 410)
Handwheel : Cast Iron as per IS 210 Gr. FG 200
Stud : Alloy Steel as per ASTM A 193 Gr. B7
Nut : Alloy Steel as per ASTM A 194 Gr. 2H
Gasket : Spiral Wound Gasket S.S. 304 Graphite Filled
Gland Packing : Braided Graphite as per IS 4687
Pressure Rating : PN 40
Hydraulic Test Pressure : Body 76 Kg/cm², Seat 38 Kg/cm²(Steam)
Working Temperature : Max. 425°C
End details : Flanged ends as per DIN 2545 Raised Face

Size/Inch	MM	Unit Price
1"	25 MM	5844
1 1/4"	32 MM	8489
1 1/2"	40 MM	8907
2"	50 MM	11411
2 1/2"	65 MM	17842
3"	80 MM	20875
4"	100 MM	30058
5"	125 MM	41887
6"	150 MM	58168

18

Model No. : PV-203

Product Name : Cast Steel Horizontal Lift Check Valve
Product Standard : BS 5160 / DIN 2401
Type of Pattern : Straight pattern
Product Description : Bolted Cover
Body & Bonnet : Cast Steel as per ASTM A 216 Gr. WCB
Type of seat & Disc : Renewable
Trim : Stainless Steel (AISI 410)
Stud : Alloy Steel as per ASTM A 193 Gr. B7
Nut : Alloy Steel as per ASTM A 194 Gr. 2H
Gasket : Spiral Wound Gasket S.S. 304 Graphite Filled
Pressure Rating : PN 40
Hydraulic Test Pressure : Body 76 Kg/cm², Seat 38 Kg/cm²(Steam)
Working Temperature : Max. 425°C
End details : Flanged ends as per DIN 2545 Raised Face

Size/Inch	MM	Unit Price
1/2"	15 MM	4036
3/4"	20 MM	4341
1"	25 MM	5150
1 1/4"	32 MM	7446
1 1/2"	40 MM	7851
2"	50 MM	10325
2 1/2"	65 MM	16179
3"	80 MM	19760
4"	100 MM	27693
5"	125 MM	38602
6"	150 MM	53715
8"	200 MM	96018

19

Model No. : PV-204

Product Name : Cast Steel Angle Lift Check Valve
Product Standard : BS 5160 / DIN 2401
Type of Pattern : Right Angle pattern
Product Description : Bolted Cover
Body & Bonnet : Cast Steel as per ASTM A 216 Gr. WCB
Type of seat & Disc : Renewable
Trim : Stainless Steel (AISI 410)
Stud : Alloy Steel as per ASTM A 193 Gr. B7
Nut : Alloy Steel as per ASTM A 194 Gr. 2H
Gasket : Spiral Wound Gasket S.S. 304 Graphite Filled
Pressure Rating : PN 40
Hydraulic Test Pressure : Body 76 Kg/cm², Seat 38 Kg/cm²(Steam)
Working Temperature : Max. 425°C
End details : Flanged ends as per DIN 2545 Raised Face

Size/Inch	MM	Unit Price
1"	25 MM	5425
1 1/4"	32 MM	7933
1 1/2"	40 MM	8351
2"	50 MM	10522
2 1/2"	65 MM	16170
3"	80 MM	19899
4"	100 MM	29224
5"	125 MM	40357
6"	150 MM	55384

20

Model No. : PV-205

Product Name : Cast Steel Parallel Slide Blow off valve
Product Description : Bolted Bonnet, Rack & Pinion Operated with key
Body & Bonnet : Cast Steel as per ASTM A 216 Gr. WCB
Type of seat & Disc : Renewable
Trim : Stainless Steel (AISI 410)
Stuffing Box: Bronze as per IS 318 LTB 2
Gland & Rack : Bronze as per IS 318 LTB 2
Stud & Nuts : Carbon Steel as per IS 1367
Gasket : Steam Jointing Sheet as per IS 2712 Gr. W/3
Gland Packing : Braided Graphite as per IS 4687
Spring : Stainless Steel as per AISI 304
Box Key & Pinion : Carbon Steel as per IS 1367
Hydraulic Test Pressure : Body 49.3 Kg/cm², Seat 24.6 Kg/cm²(Steam)
Working Temperature : Max. 400°C
End details : Flanged ends as per BS 10 Table "J" Flat face

Size/Inch	MM	Unit Price
1"	25 MM	11909
1¼"	32 MM	17719
1½"	40 MM	20413
2"	50 MM	25375
2½"	65 MM	38275

21

Model No. : PV-206

Product Name : Cast Steel Sleeve Packed Water Level Gauge
Product Description : With automatic Shut off Device in water arm
Upper & Lower arms : Cast Steel as per ASTM A 216 Gr. WCB
Product Type : Right or Left hand type
Drain valve : Cast Steel as per IBR 73 to 80
Bonnet, Plug & Stem : Stainless Steel as per AISI 410
Ball : Stainless Steel as per AISI 304
Cone : Rubber as per IS 5192
Nut : Carbon Steel as per IS 1367
Lever : S.G. Iron as per ASTM A 536
Sleeve : Moulded Graphite
Hydraulic Test Pressure : Body 49.3 Kg/cm², Seat 24.6 Kg/cm²(Steam)
Working Temperature : Max. 400°C
End details : Flanged ends as per BS 10 Table "J" flat face

Size/Inch	MM	Unit Price
¾"	20 MM	12899

22

Model No. : PV-207

Product Name : Cast Carbon Steel "Y" Type Strainer
Product Description : Bolted Cover with S.S 304 Strainer
Body & Bonnet : Carbon Steel as per ASTM A 216 Gr WCB
Strainer : Perforated S.S. Sheet as per AISI 304
Plug : Stainless Steel as per AISI 420
Hydraulic Test Pressure : Body 700 Psi (g)
Working Pressure : Max. BOP 350 Psi (g)
Working Temperature : Max. 400°C
End details : Flanged ends to BS10 Table J

Size/Inch	MM	Unit Price
1½"	40 MM	8725
2"	50 MM	10577
2½"	65 MM	14542
3"	80 MM	23267
4"	100 MM	32390
5"	125 MM	48122
6"	150 MM	67423

23

Model No. : PV-208

Product Name : Cast Carbon Steel Accessible Feed Check Valve
Product Description : Bolted Bonnet with Straight inlet
Body & Bonnet : Cast Steel as per ASTM A 216 Gr. WCB
Type of Seat & Disc : Renewable
Trim : Stainless Steel AISI 410
Stud & Nuts : Carbon Steel as per IS 1367
Gland Packing : Braided Graphite as per IS 2712 Gr W/3
Hydraulic Test Pressure : Body 700 Psi (g)
Working Pressure : Max. BOP 350 Psi (g)
Working Temperature : Max. 400°C
End details : Flanged ends to BS10 Table J

Size/Inch	MM	Unit Price
1½"	40 MM	30302
2"	50 MM	37708
2½"	65 MM	47674
3"	80 MM	68144

(WITH TEST CERTIFICATE IN FORM III-C)

24

Model No. : PV-209
Product Name : Cast carbon Steel Moisture Separator

Product Description : Internal rib type to remove the condensate from steam lines

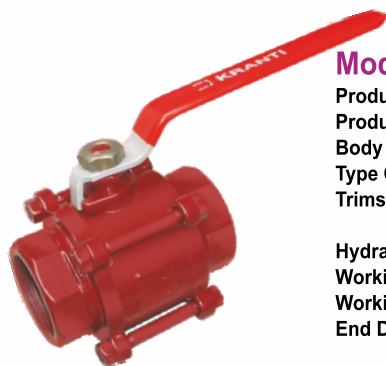
Hydraulic Test Pressure : Body 700 Psi (g)

Working Pressure: 350 Psi (g)

Working Temperature : 400 C°

End Details : Flanged ends to BS10 Table J

Size/Inch	MM	Unit Price
1"	25MM	6167
1½"	40MM	11140
2"	50MM	16623
2½"	65MM	32624
3"	80MM	34214
4"	100MM	54503

25

Model No. : PV-210
Product Name : Cast Carbon Steel Ball valve

Product Description : Bolted, 3 piece Design

Body end Connector: Cast Steel as per ASTM A 216 Gr WCB

Type Of Seat : Renewable

Trims: Stem 13% Cr Steel AISI 410, Ball S.S. AISI 304, Seat Ring Gland Packing PTFE Graphite impregnated

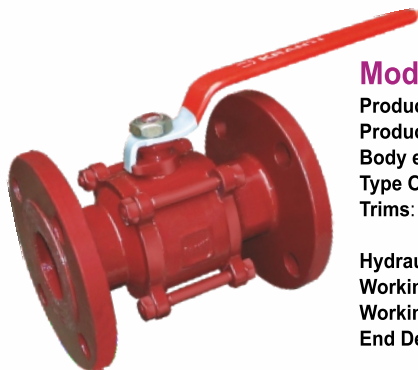
Hydraulic Pressure : 300 Pskg

Working Pressure : 150 Pskg

Working Temperature : 230° C

End Details : Screwed Female ends BSP Taper

Size/Inch	MM	Unit Price
½"	15MM	1227
¾"	20MM	1535
1"	25MM	2151
1½"	40MM	3530
2"	50MM	5370

26

Model No. : PV-211
Product Name : Cast Carbon Steel Ball valve

Product Description : Bolted, 3 piece Design

Body end Connector: Cast Steel as per ASTM A 216 Gr WCB

Type Of Seat : Renewable

Trims: Stem 13% Cr Steel AISI 410, Ball S.S. AISI 304, Seat Ring Gland Packing PTFE Graphite impregnated

Hydraulic Pressure : 300 Pskg

Working Pressure : 150 Pskg

Working Temperature : 230° C

End Details : Flanges as per ASM B CI-150 R.F. Drilled

Size/Inch	MM	Unit Price
½"	15MM	1689
¾"	20MM	2151
1"	25MM	2454
1½"	40MM	4450
2"	50MM	6446

27

Model No. : PV-212
Product Name : Cast Steel Gate Valve

Product Standard : BS 1414

Type of Pattern : Straight Pattern

Product Description : Bolted Bonnet, Outside Screw & Yoke type Rising Stem

Body & Bonnet : Cast Steel as per ASTM A 216 Gr. WCB

Type of seat & Disc : Renewable

Trim : Stainless Steel (AISI 410)

Handwheel : Cast Iron as per IS 210 Gr. FG 200

Stud : Alloy Steel as per ASTM A 193 Gr. B7

Nut : Alloy Steel as per ASTM A 194 Gr. 2H

Gasket : Spiral Wound Gasket S.S. 304 Graphite Filled

Gland Packing : Braided Graphite as per IS 4687

Pressure Rating : Class 150

Hydraulic Test Pressure : Body 38 Kg/cm², Seat 22 Kg/cm² (HYD)

Working Temperature : Max. 260°C

End details : Flanged ends as per ANSIB-16.5 CL 150 R.F.

Size/Inch	MM	Unit Price
1½"	40 MM	13803
2"	50 MM	16529
2½"	65 MM	18641
3"	80 MM	24126
4"	100 MM	31796
5"	125 MM	37771
6"	150 MM	47223
8"	200 MM	71150

(WITH TEST CERTIFICATE IN FORM III-C)
28

Model No. : PV-213

Product Name : Cast Steel Globe Valve
Product Standard : BS 1873
Type of Pattern : Straight Pattern
Product Description : Bolted Bonnet, Outside Screw & Yoke type Rising Stem
Body & Bonnet : Cast Steel as per ASTM A 216 Gr. WCB
Type of seat & Disc : Renewable
Trim : Stainless Steel (AISI 410)
Handwheel : Cast Iron as per IS 210 Gr. FG 200
Stud : Alloy Steel as per ASTM A 193 Gr. B7
Nut : Alloy Steel as per ASTM A 194 Gr. 2H
Gasket : Spiral Wound Gasket S.S. 304 Graphite Filled
Gland Packing : Braided Graphite as per IS 4687
Pressure Rating : Class 150
Hydraulic Test Pressure : Body 76 Kg/cm², Seat 38 Kg/cm²(Steam)
Working Temperature : Max. 260°C
End details : Flanged ends as per ANSI B 16.5 CL 150 R.F.

Size/Inch	MM	Unit Price
1"	25 MM	6768
1¼"	32 MM	9315
1½"	40 MM	9650
2"	50 MM	12585
2½"	65 MM	18905
3"	80 MM	22053
4"	100 MM	30182

29

Model No. : PV-214

Product Name : Cast Steel Horizontal Lift Check Valve
Product Standard : BS 1873
Type of Pattern : Straight Pattern
Product Description : Bolted Cover
Type of seat & Disc : Renewable
Trim : Stainless Steel (AISI 410)
Stud : Alloy Steel as per ASTM A 193 Gr. B7
Nut : Alloy Steel as per ASTM A 194 Gr. 2H
Locking Screw : Stainless Steel as per AISI 304
Gasket : Steam Jointing Sheet as per IS 2712 Gr. W/3
Pressure Rating : Class 150
Hydraulic Test Pressure : Body 38 Kg/cm², Seat 22 Kg/cm²
Working Pressure : Max. BOP 10.54 Kg/cm²
Working Temperature : Max. 260°C
End details : Flanged ends as per ANSI B 16.5 CL-150 R.F.

Size/Inch	MM	Unit Price
1"	25 MM	6703
1¼"	32 MM	9337
1½"	40 MM	10743
2"	50 MM	15078
2½"	65 MM	19331
3"	80 MM	25418
4"	100 MM	36087

30

Model No. : PV-215

Product Name : Cast Steel Swing Check Valve
Product Standard : BS 1868
Type of Pattern : Straight Pattern
Product Description : Bolted Cover
Type of seat & Disc : Renewable
Trim : Stainless Steel (AISI 410)
Stud : Alloy Steel as per ASTM A 193 GR. B-7
Nuts : Alloy Steel as per ASTM A 194 GR. 2-H
Gasket : Spiral Wound Gasket S.S. 304 Graphite Filled
Pressure Rating : Class 150
Hydraulic Test Pressure : Body 30 Kg/cm², Seat 22 Kg/cm²
Working Pressure : Max. BOP 10.54 Kg/cm²
Working Temperature : Max. 260°C
End details : Flanged ends as per ANSI B 16.5 CL-150 R.F.

Size/Inch	MM	Unit Price
1½"	40 mm	8542
2"	50 mm	11636
2½"	65 mm	16499
3"	80 mm	19302
4"	100 mm	27260
5"	125 mm	35747
6"	150 mm	45014
8"	200 mm	77061

31

Model No. : PV-216

Product Name : Cast Carbon Steel Full Lift Safety Valve
Type of Pattern : Angle Pattern
Product Description : Bolted Bonnet, Spring Loaded Safety Valve
Body & Bonnet : Carbon Steel (IBR Close 73 to 80 Grade B) (ASTMA 216 Gr. WCD)
Type of seat & Disc : Renewable
Trim : Stainless Steel (AISI 410)
Stud : Alloy Steel as per ASTM A 193 GR. B-7
Nuts : Alloy Steel as per ASTM A 194 GR. 2-H
Working Temperature : Max. 400°C
End details : Inlet Flanged as per ANSI CL-300
End details : Outlet Flanged as per ANSI CL-150
Working Pressure : Max. BOP 17.24 Bar at 425°C
Test Pressure : Shell Test Pressure 34.5 Bar Hyd.

Size	MM	Unit Price
1"x 1½"	25x40	29599
1"x 2"	25x50	34038
1 ½"x2"	40x50	37015
1 ½"x2½"	40x65	42554
2"x2½"	50x65	48098
2"x3"	50x80	55246
2½"x4"	65x100	65921
3X4	80x100	82616

32

Model No. : PV-413A

Product Name : Bronze Fusible Plug
Product Description : One Piece Design
Body : Bronze as per IBR 282 (A) (IV) Gr. B
Fusible Alloy : Lead tin Alloy as per IBR 333
Hydraulic Test Pressure : Body 500 Psi (g)
Working Pressure : 250 Psi (g)
Working Temperature : Max. 228°C
End details : Male end to BSP Taper

Size/Inch	MM	Unit Price
1/2"	15MM	1650
3/4"	20MM	1650
1"	25MM	2951

33

Model No. : PV-413B

Product Name : Bronze Fusible Plug
Product Description : Two Piece Design
Body : Bronze as per IBR 282 (A) (IV) Gr. B
Fusible Alloy : Lead tin Alloy as per IBR 333
Hydraulic Test Pressure : Body 500 Psi (g)
Working Pressure : 250 Psi (g)
Working Temperature : Max. 228°C
End details : Male end to BSP Taper

Size/Inch	MM	Unit Price
1/2"	15MM	2603
3/4"	20MM	2603
1"	25MM	2970
1 1/4"	32MM	3819
1 1/2"	40MM	4426
2"	50MM	6322

34

Model No. : PV-413C

Product Name : Bronze Fusible Plug
Product Description : Loco Type
Body : Bronze as per IBR 282 (A) (IV) Gr. B
Fusible Alloy : Lead tin Alloy as per IBR 333
Hydraulic Test Pressure : Body 500 Psi (g)
Working Pressure : 250 Psi (g)
Working Temperature : Max. 228°C
End details : Male end to BSP Taper

Size/Inch	MM	Unit Price
1 1/4"	32 MM	4167

35

Model No. : PV-414

Product Name : Bronze Sleeve Packed Water Level Gauge
Product Description : with automatic shut off in the water arm
Body : Bronze as per IBR 282 (A) (IV) Gr. B
Sleeve : Moulded Graphite
Stem : Stainless Steel as per AISI 410
Ball : Stainless Steel as per AISI 304
Hydraulic Test Pressure : Body 500 Psi (g)
Working Pressure : 250 Psi (g)
Working Temperature : Max. 228°C
End details : Flanged ends to BS10 Table H

Size/Inch	MM	Unit Price
1/2"	15MM	23977
3/4"	20MM	28731



Water!

LINE SERIES

Quality & Performance Together

36

Model No. : PV-403A
Product Name : ISI Marked Cast Iron Butterfly Valve as per IS 13095

Product Description : Short Wafer Type

Type of Product : **Lever Operated**
Disc Type : **S.G Iron Disc as per ASTM A 536**
Body : Cast Iron as per IS 210 FG 200

Bush : PTFE as per BS EN 12086-1

Liner : EPDM as per IS 5192-1

Lock Plate : Carbon Steel as per IS 2062

Bolts & Nuts : Carbon Steel as per IS 1367

Lever : Carbon Steel as per BS 960

Upper & Lower Stem : Stainless Steel as per IS 6603

Dowel Pin : Carbon Steel as per BS 1574

Test Pressure : 1.0/1.6 Mpa

End Details : Compatible to insertion between flanges of Bs10 Table D,E,F ASA Class 150

Size/Inch	MM	Unit Price
1"	25 MM	1487
1½"	40 MM	1565
2"	50 MM	1690
2½"	65 MM	1916
3"	80 MM	2061
4"	100MM	2555
5"	125MM	3181
6"	150MM	3872
8"	200MM	7497
10"	250MM	11734
12"	300MM	16556

37

Model No. : PV-403B
Product Name : ISI Marked Cast Iron Butterfly Valve as per IS 13095

Product Description : Short Wafer Type

Type of Product : **Gear Operated**
Disc Type : **S.G Iron Disc as per ASTM A 536**
Body : Cast Iron as per IS 210 FG 200

Bush : PTFE as per BS EN 12086-1

Liner : EPDM as per IS 5192-1

Lock Plate : Carbon Steel as per IS 2062

Bolts & Nuts : Carbon Steel as per IS 1367

Lever : Carbon Steel as per BS 960

Upper & Lower Stem : Stainless Steel as per IS 6603

Dowel Pin : Carbon Steel as per BS 1574

Test Pressure : 1.0/1.6 Mpa

End Details : Compatible to insertion between flanges of Bs10 Table D,E,F ASA Class 150

Size/Inch	MM	Unit Price
1½"	40 mm	5006
2"	50 mm	5130
2½"	65 mm	5358
3"	80 mm	5502
4"	100 mm	5996
5"	125mm	6622
6"	150mm	7302
8"	200mm	11226
10"	250mm	15458
12"	300mm	20284
14"	350mm	33169
16"	400mm	44869
18"	450mm	52152
20"	500mm	96353
24"	600mm	123693

38

Model No. : PV-403C
Product Name : ISI Marked Cast Iron Butterfly Valve as per IS 13095

Product Description : Short Wafer Type

Type of Product : **Lever Operated**
Disc Type : **S.S AISI 304 Disc CF-8**
Body : Cast Iron as per IS 210 FG 200

Bush : PTFE as per BS EN 12086-1

Liner : EPDM as per IS 5192-1

Lock Plate : Carbon Steel as per IS 2062

Bolts & Nuts : Carbon Steel as per IS 1367

Lever : Carbon Steel as per BS 960

Upper & Lower Stem : Stainless Steel as per IS 6603

Dowel Pin : Carbon Steel as per BS 1574

Test Pressure : 1.0/1.6 Mpa

End Details : Compatible to insertion between flanges of Bs10 Table D,E,F ASA Class 150

Size/Inch	MM	Unit Price
1"	25 MM	1791
1½"	40 MM	1826
2"	50 MM	1892
2½"	65 MM	2147
3"	80 MM	2498
4"	100 MM	3198
5"	125MM	3977
6"	150MM	5031
8"	200MM	9737
10"	250MM	15838
12"	300MM	21520

39

Model No. : PV-403D
Product Name : ISI Marked Cast Iron Butterfly Valve as per IS 13095

Product Description : Short Wafer Type

Type of Product : **Gear Operated**
Disc Type : **S.S AISI 304 Disc CF-8**
Body : Cast Iron as per IS 210 FG 200

Bush : PTFE as per BS EN 12086-1

Liner : EPDM as per IS 5192-1

Lock Plate : Carbon Steel as per IS 2062

Bolts & Nuts : Carbon Steel as per IS 1367

Lever : Carbon Steel as per BS 960

Upper & Lower Stem : Stainless Steel as per IS 6603

Dowel Pin : Carbon Steel as per BS 1574

Test Pressure : 1.0/1.6 Mpa

End Details : Compatible to insertion between flanges of Bs10 Table D,E,F ASA Class 150

Size/Inch	MM	Unit Price
1½"	40 mm	5267
2"	50 mm	5334
2½"	65 mm	5587
3"	80 mm	5939
4"	100 mm	6642
5"	125 mm	7417
6"	150 mm	8473
8"	200 mm	13464
10"	250 mm	19567
12"	300 mm	25248
14"	350mm	41461
16"	400mm	56122
18"	450mm	65247
20"	500mm	120443
24"	600mm	154620

CAST IRON VALVES FOR WATER LINE

(WITH OUR WORK'S TEST CERTIFICATE)

40



Model No. : PV-403E

Product Name : ISI Marked Cast Iron Butterfly Valve as per IS 13095

Product Description : Short Wafer Type

Type of Product : Lever Operated

Disc Type : S.S 316 Disc CF-8 M

Body : Cast Iron as per IS 210 FG 200

Bush : PTFE as per BS EN 12086-1

Liner : EPDM as per IS 5192-1

Lock Plate : Carbon Steel as per IS 2062

Bolts & Nuts : Carbon Steel as per IS 1367

Lever : Carbon Steel as per BS 960

Upper & Lower Stem : Stainless Steel as per IS 6603

Dowel Pin : Carbon Steel as per BS 1574

Test Pressure : 1.0/1.6 Mpa

End Details : Compatible to insertion between flanges of Bs10 Table D,E,F ASA Class 150

Size/Inch	MM	Unit Price
1"	25 MM	2068
1½"	40 MM	2093
2"	50 MM	2174
2½"	65 MM	2467
3"	80 MM	2877
4"	100 MM	3678
5"	125MM	4574
6"	150MM	5785
8"	200MM	11199
10"	250MM	18209
12"	300MM	24748

41



Model No. : PV-403F

Product Name : ISI Marked Cast Iron Butterfly Valve as per IS 13095

Product Description : Short Wafer Type

Type of Product : Gear Operated

Disc Type : S.S 316 Disc CF-8 M

Body : Cast Iron as per IS 210 FG 200

Bush : PTFE as per BS EN 12086-1

Liner : EPDM as per IS 5192-1

Lock Plate : Carbon Steel as per IS 2062

Bolts & Nuts : Carbon Steel as per IS 1367

Lever : Carbon Steel as per BS 960

Upper & Lower Stem : Stainless Steel as per IS 6603

Dowel Pin : Carbon Steel as per BS 1574

Test Pressure : 1.0/1.6 Mpa

End Details : Compatible to insertion between flanges of Bs10 Table D,E,F ASA Class 150

Size/Inch	MM	Unit Price
1½"	40 mm	5535
2"	50 mm	5613
2½"	65 mm	5908
3"	80 mm	6315
4"	100 mm	7119
5"	125mm	8015
6"	150mm	9227
8"	200mm	15485
10"	250mm	22498
12"	300mm	29037
14"	350mm	47913
16"	400mm	64677
18"	450mm	75071
20"	500mm	138599
24"	600mm	177869

Neoprene, Silicon Viton Rubber also available at nominal extra cost

S.G IRON VALVES FOR WATER LINE

42



Model No. : PV-403G

Product Name : ISI Marked S.G Iron Butterfly Valve as per IS 13095

Product Description : Short Wafer Type

Type of Product : Lever Operated

Disc Type : S.G Iron Disc AS PER ASTM A536

Body : S.G. Iron as per ASTM 536

Bush : PTFE as per BS EN 12086-1

Liner : EPDM as per IS 5192-1

Lock Plate : Carbon Steel as per IS 2062

Bolts & Nuts : Carbon Steel as per IS 1367

Lever : Carbon Steel as per BS 960

Upper & Lower Stem : Stainless Steel as per IS 6603

Dowel Pin : Carbon Steel as per BS 1574

Test Pressure : 2.2 Mpa

End Details : Compatible to insertion between flanges of Bs10 Table D,E,F ASA Class 150

Size/Inch	MM	Unit Price
1½"	40 MM	1816
2"	50 MM	1961
2½"	65 MM	2223
3"	80 MM	2391
4"	100 MM	2966
5"	125MM	3692
6"	150MM	4491
8"	200MM	8698
10"	250MM	13611
12"	300MM	19208

43



Model No. : PV-403H

Product Name : ISI Marked S.G Iron Butterfly Valve as per IS 13095

Product Description : Short Wafer Type

Type of Product : Gear Operated

Disc Type : S.G Iron Disc AS PER ASTM A536

Body : S.G. Iron as per ASTM 536

Bush : PTFE as per BS EN 12086-1

Liner : EPDM as per IS 5192-1

Lock Plate : Carbon Steel as per IS 2062

Bolts & Nuts : Carbon Steel as per IS 1367

Lever : Carbon Steel as per BS 960

Upper & Lower Stem : Stainless Steel as per IS 6603

Dowel Pin : Carbon Steel as per BS 1574

Test Pressure : 2.2 Mpa

End Details : Compatible to insertion between flanges of Bs10 Table D,E,F ASA Class 150

Note: Rates are Available for Class PN- 2.5 on Request for item number 46 & 47

Size/Inch	MM	Unit Price
1½"	40 mm	5808
2"	50 mm	5953
2½"	65 mm	6217
3"	80 mm	6384
4"	100 mm	6956
5"	125 mm	7686
6"	150 mm	8485
8"	200 mm	13024
10"	250 mm	17936
12"	300 mm	23536
14"	350mm	37765
16"	400mm	51086
18"	450mm	59375
20"	500mm	109698
24"	600mm	140825

44

Model No. : PV-4031
Product Name : ISI Marked S.G Iron Butterfly Valve as per IS 13095

Product Description : Short Wafer Type

Type of Product: **Lever Operated**
Disc Type : **S.S. 304 Disc CF-8**
Body : S.G. Iron as per ASTM A 536

Bush : PTFE as per BS EN 12086

Liner : EPDM as per IS 5192-1

Lock Plate : Carbon Steel as per IS 2062

Bolts & Nuts : Carbon Steel as per IS 1367

Lever & Lever Lock Screw : Carbon Steel as per BS 960

Upper & Lower Stem : Stainless Steel as per IS 6603

Dowel Pin : Carbon Steel as per BS 1574

Test Pressure: 2.2 Mpa

End Details : Compatible to insertion between flanges of BS 10 Table
D, E, F, ASA Class-150, 300 IS 6392 Table 17

Size/Inch	MM	Unit Price
1½"	40 MM	2119
2"	50 MM	2196
2½"	65 MM	2492
3"	80 MM	2900
4"	100 MM	3711
5"	125 MM	4612
6"	150 MM	5840
8"	200 MM	11297
10"	250 MM	18374
12"	300 MM	24970

45

Model No. : PV-403J
Product Name : ISI Marked S.G Iron Butterfly Valve as per IS 13095

Product Description : Short Wafer Type

Type of Product: **Gear Operated**
Disc Type : **S.S. 304 Disc CF-8**
Body : S.G. Iron as per ASTM A 536

Bush : PTFE as per BS EN 12086

Liner : EPDM as per IS 5192-1

Lock Plate : Carbon Steel as per IS 2062

Bolts & Nuts : Carbon Steel as per IS 1367

Lever & Lever Lock Screw : Carbon Steel as per BS 960

Upper & Lower Stem : Stainless Steel as per IS 6603

Dowel Pin : Carbon Steel as per BS 1574

Test Pressure: 2.2 Mpa

End Details : Compatible to insertion between flanges of BS 10 Table
D, E, F, ASA Class-150, 300 IS 6392 Table 17

Note: Rates are Available for Class PN- 2.5 on Request for item number 48 & 49

Size/Inch	MM	Unit Price
1½"	40 mm	6111
2"	50 mm	6188
2½"	65 mm	6483
3"	80 mm	6890
4"	100 mm	7706
5"	125mm	8606
6"	150mm	9831
8"	200mm	15622
10"	250mm	22702
12"	300mm	29294
14"	350mm	47205
16"	400mm	63858
18"	450mm	74218
20"	500mm	137123
24"	600mm	176032

46

Model No. : PV-403K
Product Name : ISI Marked S.G Iron Butterfly Valve as per IS 13095

Product Description : Short Wafer Type

Type of Product: **Lever Operated**
Disc Type : **S.S. 316 Disc CF-8 M**
Body : S.G. Iron as per ASTM A 536

Bush : PTFE as per BS EN 12086

Liner : EPDM as per IS 5192-1

Lock Plate : Carbon Steel as per IS 2062

Bolts & Nuts : Carbon Steel as per IS 1367

Lever & Lever Lock Screw : Carbon Steel as per BS 960

Upper & Lower Stem : Stainless Steel as per IS 6603

Dowel Pin : Carbon Steel as per BS 1574

Test Pressure: 2.2 Mpa

End Details : Compatible to insertion between flanges of BS 10 Table
D, E, F, ASA Class-150, 300 IS 6392 Table 17

Size/Inch	MM	Unit Price
1½"	40 MM	2430
2"	50 MM	2522
2½"	65 MM	2862
3"	80 MM	3336
4"	100 MM	4268
5"	125 MM	5309
6"	150 MM	6712
8"	200 MM	12992
10"	250 MM	21128
12"	300 MM	28712

47

Model No. : PV-403L
Product Name : ISI Marked S.G Iron Butterfly Valve as per IS 13095

Product Description : Short Wafer Type

Type of Product: **Gear Operated**
Disc Type : **S.S. 316 Disc CF-8 M**
Body : S.G. Iron as per ASTM A 536

Bush : PTFE as per BS EN 12086

Liner : EPDM as per IS 5192-1

Lock Plate : Carbon Steel as per IS 2062

Bolts & Nuts : Carbon Steel as per IS 1367

Lever & Lever Lock Screw : Carbon Steel as per BS 960

Upper & Lower Stem : Stainless Steel as per IS 6603

Dowel Pin : Carbon Steel as per BS 1574

Test Pressure: 2.2 Mpa

End Details : Compatible to insertion between flanges of BS 10 Table
D, E, F, ASA Class-150, 300 IS 6392 Table 17

Note: Rates are Available for Class PN- 2.5 on Request for item number 50 & 51

Size/Inch	MM	Unit Price
1½"	40 mm	6423
2"	50 mm	6513
2½"	65 mm	6853
3"	80 mm	7327
4"	100 mm	8259
5"	125mm	9299
6"	150mm	10704
8"	200mm	17966
10"	250mm	26100
12"	300mm	33685
14"	350mm	54284
16"	400mm	73433
18"	450mm	85349
20"	500mm	156092
24"	600mm	202433

48

Model No. : PV-404A

Product Name : Cast Iron Dual Plate Check Valve
Product Description : Wafer Type Non Return Valve
Body : Cast Iron as per IS 210 FG 200
Liner : Rubber
Pin : Stainless Steel as per IS 6603
Washer : Stainless Steel as per IS 6603
Spring : Stainless Steel as per IS 6603
Flap : S.G. Iron as per ASTM A 536
Hook : Carbon Steel as per IS 1367
Test Pressure : 1.6 Mpa
End Details : Compatible to insertion between flanges of BS 10 Table D, E, F, ASA Class-150, DIN PN-16

Size/Inch	MM	Unit Price
2"	50 MM	1725
2½"	65 MM	1904
3"	80 MM	2547
4"	100 MM	3524
5"	125 MM	5453
6"	150 MM	6534
8"	200 MM	10418
10"	250 MM	15560
12"	300 MM	28547

49

Model No. : PV-404B

Product Name : Cast Iron Dual Plate Check Valve
Product Description : Wafer Type Non Return Valve
Body : Cast Iron as per IS 210 FG 200
Liner : Rubber
Pin : Stainless Steel as per IS 6603
Washer : Stainless Steel as per IS 6603
Spring : Stainless Steel as per IS 6603
Flap : S.S. 304 as per ASTM A 351 CF/8
Hook : Carbon Steel as per IS 1367
Test Pressure : 1.6 Mpa
End Details : Compatible to insertion between flanges of BS 10 Table D, E, F, ASA Class-150, DIN PN-16

Size/Inch	MM	Unit Price
2"	50 MM	2068
2½"	65 MM	2316
3"	80 MM	3061
4"	100 MM	4580
5"	125 MM	7088
6"	150 MM	8493
8"	200 MM	13541
10"	250 MM	24884
12"	300 MM	39994

50

Model No. : PV-415

Product Name : SG Iron Wafer Type Check Valve
Body & Flap : SG Iron AS per ASTM A 536
Type of seat & Disc : Renewable (EPDM)
Screw & Washer : AISI 304
Hydraulic Test Pressure : Body 24 Kg/cm², Seat 16 Kg/cm² Hyd
End details : Insertion Between Flanges of AISI CLASS 150

Size/Inch	MM	Unit Price
1½"	40 mm	1157
2"	50 mm	1295
2½"	65 mm	1528
3"	80 mm	1951
4"	100 mm	2517
5"	125mm	3386
6"	150mm	4363
8"	200mm	7431
10"	250mm	9942
12"	300mm	14491

51

NEW PRODUCT
Model No. : PV-417

Product Name : Cast Iron "T" Type Strainer
Product Description : Bolted Bonnet with S.S 304 perforated Screen Sheet having smooth contours to reduce the friction losses
Body : Cast Iron as per IS 210 FG 200
Cover : Cast Iron as per IS 210 FG 200
Mesh type : Stainless Steel as per IS 6603
Gasket : Steam Jointing Sheet as per 2712 Gr. W/3
Test Pressure : 21.1 Kg/cm²
End Details : Flanged Ends

Size/Inch	MM	Unit Price
1½"	40 MM	2849
2"	50 MM	3201
2½"	65 MM	3936
3"	80 MM	4877
4"	100 MM	8201
6"	150 MM	12705
8"	200 MM	25003
10"	250 MM	39963
12"	300 MM	49995

52

Model No. : PV-405
Product Name : ISI Marked Cast Iron Ball Valve as per IS 9890-1981

Product Description : Screwed in Bonnet, 2 Piece Design

Type of Pattern : Straight Type Lever Operated with PVC Sleeve

Body : Cast Iron as per IS 210 FG 220

Connector : Cast Iron as per IS 210 FG 220

Stem : Stainless Steel as per IS 6603

Gland Nut : Carbon Steel as per IS 1367

Gland Packing : PTFE as per BS EN 12086-1

Ball : Stainless Steel as per IS 6603

Ring : PTFE as per BS EN 12086-1

Nuts : Carbon Steel as per IS 1363

Lever : Carbon Steel as per IS 1367

Test Pressure : 1.6 Mpa

End Details : Screwed Female Ends

Size/Inch	MM	Unit Price
1/2"	15 MM	330
3/4"	20 MM	451
1"	25 MM	543
1 1/4"	32 MM	1141
1 1/2"	40 MM	1309
2"	50 MM	1936
2 1/2"	65 MM	3396
3"	80 MM	5011
4"	100 MM	10577

53

Model No. : PV-406
Product Name : ISI Marked Cast Iron Ball Valve as per IS 9890-1981

Product Description : Bolted end Connector, 3 Piece Design

Type of Pattern : Straight Type Lever Operated with PVC Sleeve

Body : Cast Iron as per IS 210 FG 220

Connector : Cast Iron as per IS 210 FG 220

Stem : Stainless Steel as per IS 6603

Gland Nut : Carbon Steel as per IS 1367

Gland Packing : PTFE as per BS EN 12086-1

Ball : Stainless Steel as per IS 6603

Ring : PTFE as per BS EN 12086-1

Nuts : Carbon Steel as per IS 1363

Lever : Carbon Steel as per IS 1367

Test Pressure : 1.6 Mpa

End Details : Flanged ends

Size/Inch	MM	Unit Price
1/2"	15 MM	1016
3/4"	20 MM	1157
1"	25 MM	1449
1 1/4"	32 MM	1892
1 1/2"	40 MM	2283
2"	50 MM	3286
2 1/2"	65 MM	5430
3"	80 MM	7514
4"	100 MM	12663
5"	125 MM	27986
6"	150 MM	35563

Ball Valves with S.S. 316 Ball also available at nominal extra charges
54

Model No. : PV-407
Product Name : Cast Iron "Y" Type Strainer

Product Description : Screwed In Bonnet with S.S 304 perforated Screen Sheet having smooth contours to reduce the friction losses

Body : Cast Iron as per IS 210 FG 200

Cover : Cast Iron as per IS 210 FG 200

Mesh type : Stainless Steel as per IS 6603

Gasket : Steam Jointing Sheet as per 2712 Gr. W/3

Test Pressure : 21.1 Kg/cm²
End Details : Screwed Female Ends

Size/Inch	MM	Unit Price
1/2"	15 MM	252
3/4"	20 MM	344
1"	25 MM	540
1 1/4"	32 MM	875
1 1/2"	40 MM	1135
2"	50 MM	1645
2 1/2"	65 MM	2242
3"	80 MM	4074
4"	100 MM	5676

55

Model No. : PV-408
Product Name : Cast Iron "Y" Type Strainer

Product Description : Bolted Bonnet with S.S 304 perforated Screen Sheet having smooth contours to reduce the friction losses

Body : Cast Iron as per IS 210 FG 200

Cover : Cast Iron as per IS 210 FG 200

Mesh type : Stainless Steel as per IS 6603

Gasket : Steam Jointing Sheet as per 2712 Gr. W/3

Bolts & Nuts : Carbon Steel as per IS 1363

Test Pressure : 21.1 Kg/cm²
End Details : Flanged Ends

Size/Inch	MM	Unit Price
1 1/2"	40 MM	2140
2"	50 MM	2774
2 1/2"	65 MM	3249
3"	80 MM	4874
4"	100 MM	7580
5"	125 MM	10153
6"	150 MM	12399
8"	200 MM	25992
10"	250 MM	47449
12"	300 MM	65396

Strainers with brass mesh also available at nominal extra charges

56

Model No. : PV-401A
Product Name : ISI Marked Cast Iron Sluice Valve as per IS 14846

Product Description : Bolted Bonnet, Non Rising S.S. 410 Spindle with bronze working parts

Body & Bonnet : Cast Iron as per IS 210 FG 200

Gland & Thurst Plate : Cast Iron as per IS 210 FG 200

Wedge & Stuffing Box : Cast Iron as per IS 210 FG 200

Handwheel : Cast Iron as per IS 210 FG 200

Stem : Stainless Steel as per IS 6603

Bolts & Nuts : Carbon Steel as per IS 1363

Wedge Nut & Wedge Ring : Bronze as per IS 318 Gr. LTB 2

Body Seat Ring : Bronze as per IS 318 Gr. LTB 2

Gland Packing : Jute/Hemp as per IS 5414

Gasket : Rubber as per IS 638 Type B

Test Pressure : 1.6 Mpa

End Details : Flanged Ends as per IS 1538

Size/Inch	MM	Unit Price
2"	50 MM	5249
2½"	65 MM	6373
3"	80 MM	7358
4"	100 MM	10348
5"	125 MM	13881
6"	150 MM	16052
8"	200 MM	26550
10"	250 MM	39688
12"	300 MM	47763
14"	350mm	85958
16"	400mm	104546
18"	450mm	122646
20"	500mm	279356
24"	600mm	313227

57

Model No. : PV - 401B
Product Name : Cast Iron Gate Valve as per IS 14846

Product Description : Bolted Bonnet, Rising Spindle

Body & Bonnet : Cast Iron as per IS 210 FG 200

Wedge & Gland : Cast Iron as per IS 210 FG 200

Type of Disc : Solid Wedge

Handwheel : Cast Iron as per IS 210 FG 200

Stem : Stainless Steel as per IS 6603

Bolts & Nuts : Carbon Steel as per IS 1363

Wedge Nut & Wedge Ring : Bronze as per IS 318 Gr. LTB 2

Body Seat Ring : Bronze as per IS 318 Gr. LTB 2

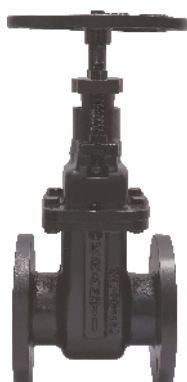
Gland Packing : Jute/Hemp as per IS 5414

Gasket : Rubber as per IS 638 Type B

Test Pressure : 1.0/1.6 Mpa

End Details : Flanged Ends as per IS 1538

Size/Inch	MM	Unit Price
2"	50 MM	6827
2½"	65 MM	8285
3"	80 MM	9362
4"	100 MM	13452
5"	125 MM	18046
6"	150 MM	20867
8"	200 MM	34517
10"	250 MM	51592
12"	300 MM	62092

58

Model No. : PV - 401C
Product Name : Cast Iron Sluice Valve as per IS 780

Product Description : Bolted Bonnet, Non Rising Spindle

Body & Bonnet : Cast Iron as per IS 210 FG 200

Wedge & Gland : Cast Iron as per IS 210 FG 200

Type of Disc : Hollow Wedge

Handwheel : Cast Iron as per IS 210 FG 200

Stem : Stainless Steel as per IS 6603

Bolts & Nuts : Carbon Steel as per IS 1363

Wedge Nut & Wedge Ring : Bronze as per IS 318 Gr. LTB 2

Body Seat Ring : Bronze as per IS 318 Gr. LTB 2

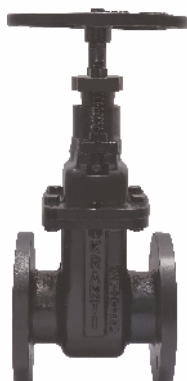
Gland Packing : Jute/Hemp as per IS 5414

Gasket : Rubber as per IS 638 Type B

Test Pressure : 1.0/1.6 Mpa

End Details : Flanged Ends as per IS 1538

Size/Inch	MM	Unit Price
2"	50 MM	5512
2½"	65 MM	6694
3"	80 MM	7724
4"	100 MM	10865
5"	125 MM	14576
6"	150 MM	16855
8"	200 MM	27878
10"	250 MM	41672
12"	300 MM	50151

59

Model No. : PV - 401D
Product Name : Cast Iron Sluice Valve as per IS 14846

Product Description : Bolted Bonnet, Non Rising Spindle

Body & Bonnet : Cast Iron as per IS 210 FG 200

Wedge & Gland : Cast Iron as per IS 210 FG 200

Type of Disc : Hollow Wedge

Handwheel : Cast Iron as per IS 210 FG 200

Stem : High Tensile Brass as per IS 320

Bolts & Nuts : Carbon Steel as per IS 1363

Wedge Nut & Wedge Ring : Bronze as per IS 318 Gr. LTB 2

Body Seat Ring : Bronze as per IS 318 Gr. LTB 2

Gland Packing : Jute/Hemp as per IS 5414

Gasket : Rubber as per IS 638 Type B

Test Pressure : 1.0/1.6 Mpa

End Details : Flanged Ends as per IS 1538

Size/Inch	MM	Unit Price
2"	50 MM	5774
2½"	65 MM	7009
3"	80 MM	8092
4"	100 MM	11383
5"	125 MM	15269
6"	150 MM	17656
8"	200 MM	29206
10"	250 MM	43657
12"	300 MM	52542

60
NEW PRODUCT
Model No. : PV-418
Product Name : Cast Iron "Y" Type Strainer TABLE - E

Product Description : Bolted Bonnet with S.S 304 perforated Screen Sheet having smooth contours to reduce the friction losses

Body : Cast Iron as per IS 210 FG 200

Cover : Cast Iron as per IS 210 FG 200

Mesh type : Stainless Steel as per IS 6603

Gasket : Steam Jointing Sheet as per 2712 Gr. W/3

Bolts & Nuts : Carbon Steel as per IS 1363

Test Pressure : 21.1 Kg/cm²
End Details : Flanged Ends

Strainers with brass mesh also available at nominal extra charges


Size/Inch	MM	Unit Price
1½"	40 MM	2021
2"	50 MM	2497
2½"	65 MM	2925
3"	80 MM	4387
4"	100 MM	6822
5"	125 MM	9138
6"	150 MM	11160
8"	200 MM	23393
10"	250 MM	42704
12"	300 MM	58857

61
NEW PRODUCT
Model No. : PV-416
Product Name : Ductile Iron Resilient Seated Gate Valve

Body & Bonnet : Ductile Iron

Gland & Thrust Plate : Ductile Iron as per IS 210 FG 200

Disc : Ductile Iron Rubber Coated

Handwheel : Cast Iron as per IS 210 FG 200

Stem : Stainless Steel as per IS 6603

Stem Nut : Gun Metal / D.I

Bolts & Nuts : Carbon Steel as per IS 1363

Gland Packing : Jute/Hemp as per IS 5414

Test Pressure : 1.6 Mpa

End Details : Flanged Ends as per IS 1538


Size/Inch	MM	Unit Price
2"	50 MM	4585
2½"	65 MM	5453
3"	80 MM	6471
4"	100 MM	8675
5"	125 MM	11041
6"	150 MM	13257
8"	200 MM	24448
10"	250 MM	47336
12"	300 MM	66232

62
Model No. : PV-402A
Product Name : ISI Marked Cast Iron Non Return Valve as per IS 5312

Product Description : Bolted Cover, Swing Type

Body, Cover & Hinge : Cast Iron as per IS 210 FG 200

Body Seat Ring : Bronze as per IS 318 Gr. LTB 2

Disc Type : Cast Iron as per IS 210 FG 200

Disc Face : Rubber as per IS 638 Type B

Hinge Pin : Stainless Steel as per IS 6603

Washer : Carbon Steel as per IS 1363

Side Plug : Stainless Steel as per IS 6603

Gasket : Rubber as per IS 638 Type B

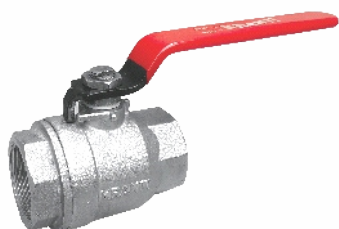
Stud & Nuts : Carbon Steel as per IS 1363

Test Pressure : 1.6 Mpa

End details : Flanged ends as per IS 1538


Size/Inch	MM	Unit Price
2"	50 MM	3281
2½"	65 MM	4291
3"	80 MM	7382
4"	100 MM	8001
5"	125 MM	11408
6"	150 MM	15294
8"	200 MM	21351
10"	250 MM	34147
12"	300 MM	43877

(WITH OUR WORK'S TEST CERTIFICATE)

63
NEW PRODUCT

Model No. : PV-419
Product: Kranti S.S. 304 Ball Valve Scd. Ends

Product Standard: Bs:5351

Pressure/class Rating: 1000 Wog

Body Material: (Stainless Steel) CF-8

Port Opening: Full Bore

Product Description: Two Piece Design

Type Of Seat: Renewable Seats

Trim-stem & Ball : Aisi304

Seat Ring & Gland Packing: Teflon (PTFE)

End Details: Scd. Female Bsp (parallel)

Test Pressure: B.t.p.-100 Bar (hyd)

Size/Inch	MM	Unit Price
1/2"	15 MM	526
3/4"	20 MM	834
1"	25 MM	1202
1 1/4"	32 MM	1582
1 1/2"	40 MM	2307
2"	50 MM	3490

64
NEW PRODUCT

Model No. : PV-420
Product: Kranti S.S. 304 Ball Valve Flg. Ends

Product Standard: Bs:5351

Pressure/class Rating: 1000 Wog

Body Material: (stainless Steel) CF-8

Port Opening: Full Bore

Product Description: Three Piece Design

Type Of Seat: Renewable Seats

Trim-stem & Ball : Aisi304

Seat Ring & Gland Packing: Teflon(PTFE)

End Details: Flg. Female Bsp (parallel)

Test Pressure: B.t.p.-100 Bar (hyd)

Size/Inch	MM	Unit Price
1/2"	15 MM	1341
3/4"	20 MM	1956
1"	25 MM	2404
1 1/4"	32 MM	3056
1 1/2"	40 MM	4118
2"	50 MM	6630

65
NEW PRODUCT

Model No. : PV-421
Product: Kranti S.S. 316 Ball Valve Scd. Ends

Product Standard: Bs:5351

Pressure/class Rating: 1000 Wog

Body Material: (Stainless Steel) CF-8M

Port Opening: Full Bore

Product Description: Two Piece Design

Type Of Seat: Renewable Seats

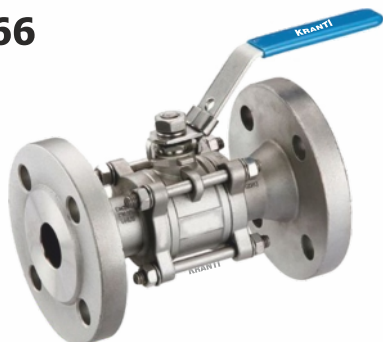
Trim-stem & Ball : Aisi304

Seat Ring & Gland Packing: Teflon (PTFE)

End Details: Scd. Female Bsp (parallel)

Test Pressure: B.t.p.-100 Bar (hyd)

Size/Inch	MM	Unit Price
1/2"	15 MM	665
3/4"	20 MM	1051
1"	25 MM	1510
1 1/4"	32 MM	1980
1 1/2"	40 MM	2887
2"	50 MM	4371

66
NEW PRODUCT

Model No. : PV-422
Product: Kranti S.S. 316 Ball Valve Flg. Ends

Product Standard: Bs:5351

Pressure/class Rating: 1000 Wog

Body Material: (stainless Steel) CF-8M

Port Opening: Full Bore

Product Description: Three Piece Design

Type Of Seat: Renewable Seats

Trim-stem & Ball : Aisi304

Seat Ring & Gland Packing: Teflon(PTFE)

End Details: Flg. Female Bsp (parallel)

Test Pressure: B.t.p.-100 Bar (hyd)

Size/Inch	MM	Unit Price
1/2"	15 MM	1679
3/4"	20 MM	2452
1"	25 MM	3007
1 1/4"	32 MM	3816
1 1/2"	40 MM	5157
2"	50 MM	8296

67

Model No. : PV-409
Product Name : Cast Iron Single Air Valve as per IS 14845

Product Description : Bolted Cover

Body & Cover : Cast Iron as per IS 210 FG 200

Cowl : Cast Iron as per IS 210 FG 200

Float : Timber Core with Rubber Coating

Small Orifice : Stainless Steel Rubber Coated as per IS 6603

Bolts & Nuts : Carbon Steel as per IS 1363

Hex Nipple : Carbon Steel as per IS 1367

Test Pressure : 16 Kg/cm²
End details : Screwed Male end as per IS 554

Size/Inch	MM	Unit Price
1/2"	15 MM	2045
3/4"	20 MM	2045
1"	25 MM	2131
1 1/2"	40 MM	3821
2"	50 MM	4204

68

Model No. : PV-410
Product Name : Cast Iron Double Air Valve as per IS 14845

Product Description : Bolted Cover, Isolating Type

Body & Cover : Cast Iron as per IS 210 FG 200

Cowl : Cast Iron as per IS 210 FG 200

Float : Timber Core with Rubber Coating

Small Orifice : Stainless Steel Rubber Coated as per IS 6603

Large Orifice : Cast Iron Rubber Coated as per IS 210 FG 200

Bolts & Nuts : Carbon Steel as per IS 1363

Test Pressure : 16 Kg/cm²
End details : Flanged end as per IS 1538

Size/Inch	MM	Unit Price
1 1/2"	40 MM	17082
2"	50 MM	18035
3"	80 MM	23375
4"	100 MM	40868
6"	150 MM	63740

69

Model No. : PV-410A
Product Name : Cast Iron Double Air Valve as per IS 14845

Product Description : Bolted Cover

Body & Cover : Cast Iron as per IS 210 FG 200

Cowl : Cast Iron as per IS 210 FG 200

Float : Timber Core with Rubber Coating

Small Orifice : Stainless Steel Rubber Coated as per IS 6603

Large Orifice : Cast Iron Rubber Coated as per IS 210 FG 200

Bolts & Nuts : Carbon Steel as per IS 1363

Test Pressure : 16 Kg/cm²
End details : Flanged end as per IS 1538

Size/Inch	MM	Unit Price
1 1/2"	40 MM	9998
2"	50 MM	11642
3"	80 MM	13966
4"	100 MM	21490
6"	150 MM	42337

70

Model No. : PV-411
Product Name : Cast Iron Kinetic Air Valve as per IS 14845

Product Description : Bolted Cover

Body & Cover : Cast Iron as per IS 210 FG 200

Cowl : Cast Iron as per IS 210 FG 200

Float : Timber Core with Rubber Coating

Small Orifice : Stainless Steel Rubber Coated as per IS 6603

Large Orifice : Cast Iron Rubber Coated as per IS 210 FG 200

Bolts & Nuts : Carbon Steel as per IS 1363

Test Pressure : 16 Kg/cm²
End details : Flanged end as per IS 1538

Size/Inch	MM	Unit Price
1	25 MM	5542
1 1/2	40 MM	6586
2"	50 MM	7789
3"	80 MM	10967
4"	100 MM	16023
6"	150 MM	29928
8"	200 MM	43073

71

Model No. : PV-411A
Product Name : Cast Iron Kinetic Air Valve non tampered type as per IS 14845

Product Description : Bolted Cover

Body & Cover : Cast Iron as per IS 210 FG 200

Cowl : Cast Iron as per IS 210 FG 200

Float : Timber Core with Rubber Coating

Small Orifice : Stainless Steel Rubber Coated as per IS 6603

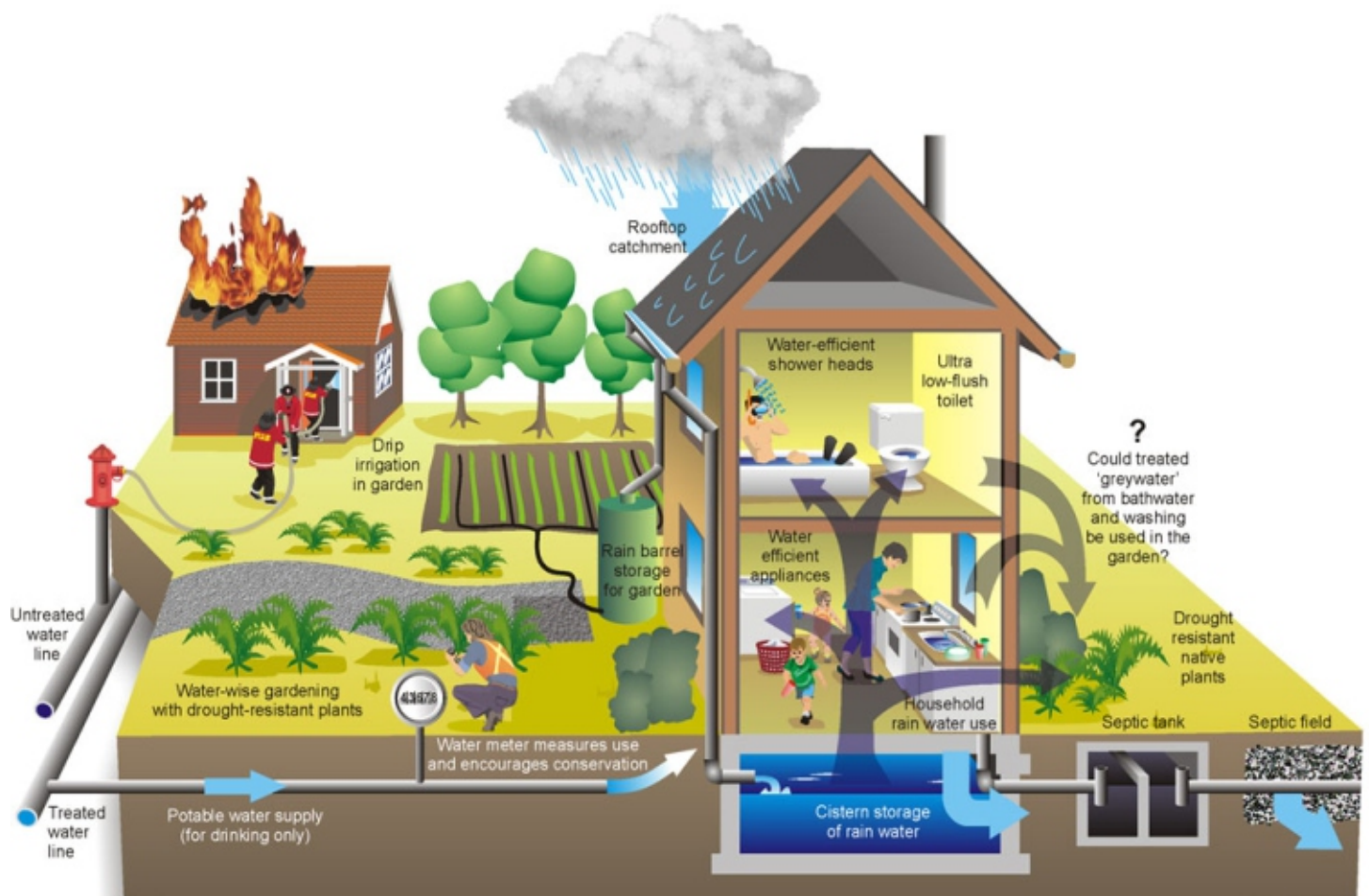
Large Orifice : Cast Iron Rubber Coated as per IS 210 FG 200

Bolts & Nuts : Carbon Steel as per IS 1363

Test Pressure : 16 Kg/cm²
End details : Flanged end as per IS 1538

Size/Inch	MM	Unit Price
3"	80 MM	13709
4"	100 MM	20029

put a stop...
to the drop...



Terms and Conditions:

1. Prices listed are in Indian Rupees F.O.R. Ex Factory Jalandhar
2. 18 % GST will be extra.
3. We also reserve the right to execute any order in full or in parts according to our supply position or manufacturing capacity.
4. The Prices are subject to revision, without any prior notice & shall be charged, as prevailing at the time of dispatch.
5. "KRANTI" valves carry guarantee for free replacement against any manufacturing defect for 15 months from the date of supply or 12 months from the date of installation, whichever is earlier.
6. Each IBR valve is supplied with an IBR test certificate on form III-C Issued by director of boilers Punjab
7. Any type of thread standard can also be supplied on customer requirement.
8. Valves with customer specification can also be supplied
9. Flanged Valves are generally supplied UNDRILLED, unless & until specified by the buyer.
10. Goods would not be returned nor exchanged, once the supplies have been billed and executed.
11. Competent courts at Jalandhar alone, shall have jurisdiction over any dispute
12. This price list cancels and supercedes all our previous Price Lists.

The Ultimate Solution



Manufacturer :

PARAS VALVES PVT. LTD.

(AN ISO 9001:2015 Certified Co.)

101, KRANTI Industrial Area
Gadaipur, Jalandhar-4, India

Ph.: +91-181-2603614, 15, 16

Email.: paras.valves@gmail.com

Web : www.kranti-group.com